

SPCL-00747 - Enabling Link 16, TTNT, & IFF to Share a Common Platform

◆ Features:

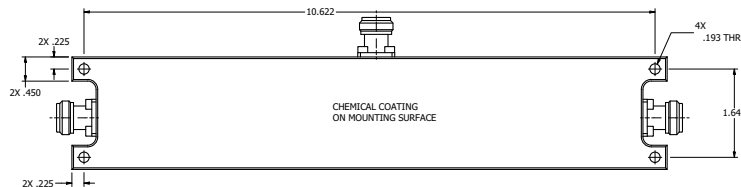
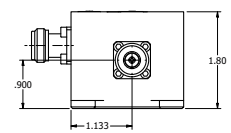
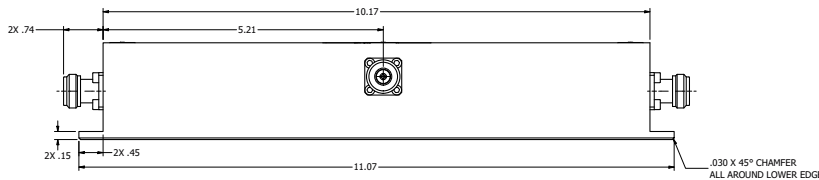
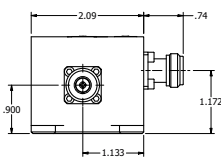
- SPCL-00747 is K&L Microwave's filtering solution for co-location of Link 16, TTNT, and IFF
- Low-Loss
- High Power
- Rugged Compact Design for Harsh Environments
- Mechanical Dimensions: 10.17" x 2.09" x 1.80"



◆ Specifications:

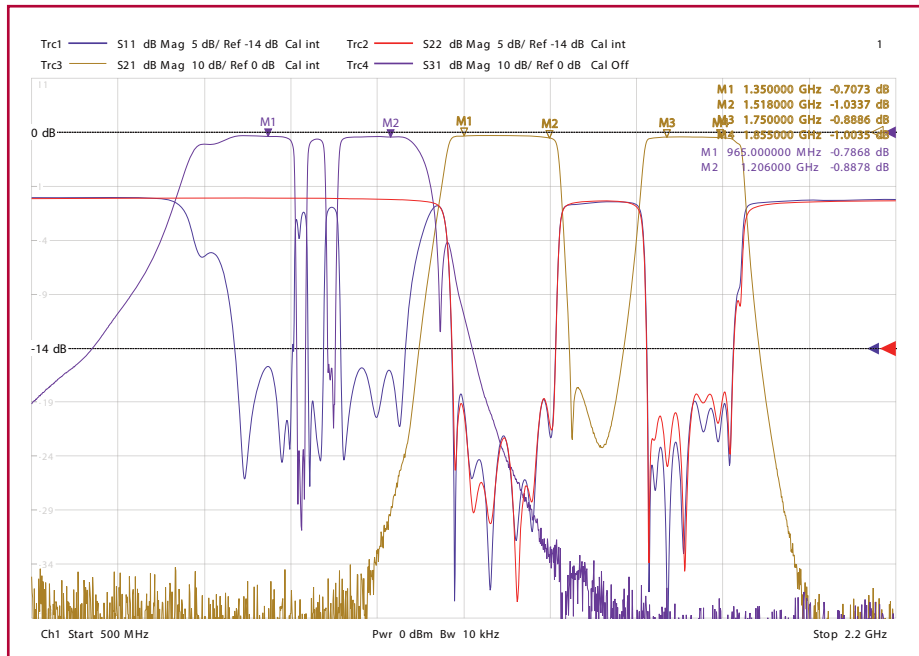
Frequency Range	Port A				Port B			
	962-1010	1023-1037	1050-1068	1083-1097	1110-1215	1350-1518	1750-1855	
Insertion Loss	2.0 dB Max. (962-1008)	NA	2.0 dB Max. (1053-1065)	NA	2.0 dB Max. (1113-1212)	1.0 dB	1.0 dB	
Passband Ripple	+/-0.3 dB		+/-0.3 dB		+/-0.3 dB	+/-0.3 dB	+/-0.3 dB	+/-0.3 dB
Group Delay Variation	22 ns Max. (962-1007)		22 ns Max. (1052-1068)		22 ns Max. (1112-1215)	+/-13 ns	+/-13 ns	
VSWR (In/Out)	1.5:1		1.5:1		1.5:1	1.33:1	1.33:1	
Stop Band/ Rejection	3 dBc Max. @ 1012 wrt 962-1010 58 dBa (1023-1037) 3 dBc Max. @ 1048 wrt 1050-1068	58 dBa Min.	3 dBc Max. @ 1070 wrt 1050-1068 3 dBc Max. @ 1108 wrt 1110-1215	41 dBa Min.	NA	965-1206: 65 dB 1565-1585: 42 dB 2700-5000: 60 dB		
Power	400 W Peak 50 W Avg.	250 W Peak 4 W Avg.	400 W Peak 50 W Avg.	250 W Peak 4 W Avg.	400 W Peak 50 W Avg.	250 W Peak 50% Duty Cycle		

All Specifications Reference Common Port C

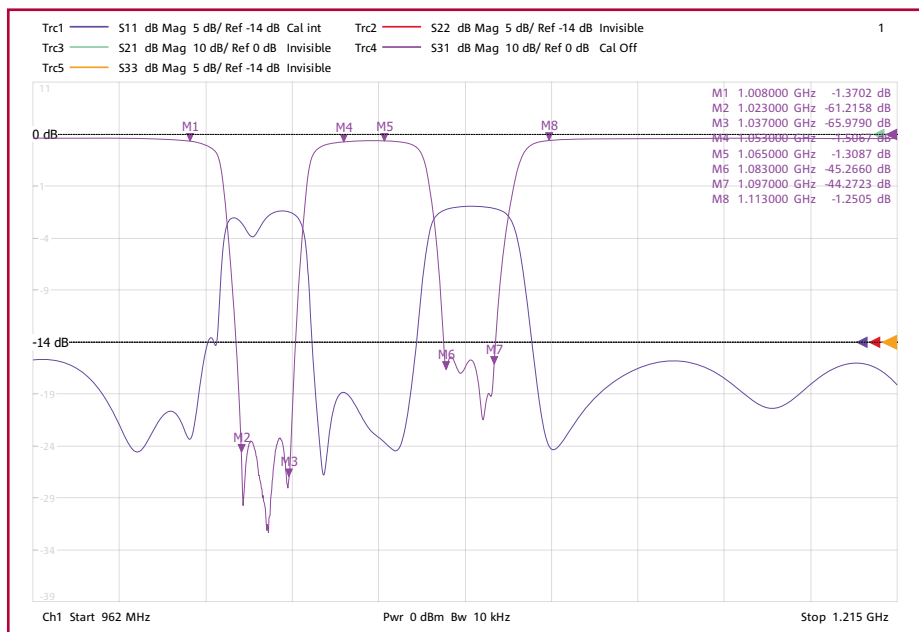


SPCL-00747 - Enabling Link 16, TTNT, & IFF to Share a Common Platform

◆ Performance Data:



S11, S21 and S31: Antenna to Link 16 and TTNT



S11 and S21: Antenna to Link 16 "Notching" IFF (1030-1090 MHz)